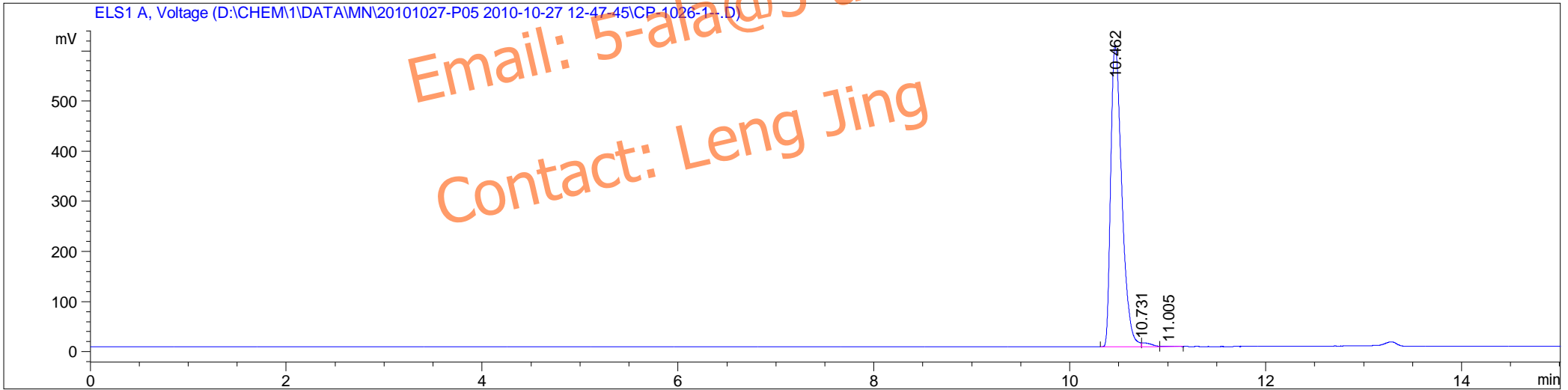


Sample Name: CP-1026-1

```
=====
Acq. Operator   : MN                      Seq. Line :    3
Acq. Instrument : HPLC-2                  Location  : P1-A-09
Injection Date  : 10/27/2010 1:39:05 PM   Inj       :    1
                                           Inj Volume: 5 µl
Different Inj Volume from Sequence !      Actual Inj Volume : 1.5 µl
Acq. Method     : D:\CHEM\1\DATA\MN\20101027-P05 2010-10-27 12-47-45\P05-20101027-1.M
Last changed    : 10/27/2010 1:38:40 PM by MN
                 (modified after loading)
Analysis Method : D:\CHEM\1\DATA\MN\20101027-P05 2010-10-27 12-47-45\CP-1026-1.D\DA.M (P05-20101027-1.M)
Last changed    : 10/27/2010 12:07:08 PM by MN
Method Info     : Column:HILIC 150 mm*4.6*5 µm Flow Rate:1.0ml/min
                 Temperature:30 UV Detector:214&200nm&ELSD
                 Mobile Phase A 0.05%FA in H2O B:0.025%FA in ACN
                 T:0      3      12      15
                 B:90    90    60     60
```

Web: www.5-ala.com.cn
Email: 5-ala@5-ala.com.cn
Contact: Leng Jing



Sample Name: CP-1026-1

=====
Area Percent Report
=====

Sorted By : Signal
Multiplier : 1.0000
Dilution : 1.0000
Use Multiplier & Dilution Factor with ISTDs

Signal 1: ELS1 A, Voltage

Peak #	RetTime [min]	Type	Width [min]	Area [mV*s]	Height [mV]	Area %
1	10.462	MF R	0.1309	4717.87500	600.82727	98.8024
2	10.731	FM R	0.0785	49.27421	7.45810	1.0319
3	11.005	FM R	0.1288	7.91031	9.09742e-1	0.1657

Totals : 4775.05952 609.19511

=====
*** End of Report ***

Web: www.5-ala.com.cn
Email: 5-ala@5-ala.com.cn
Contact: Leng Jing